

## Advanced Solutions for Data Center



Data Center



### Why Choose US?



**Extensive Expertise**  
Scientists with 200+ years of combined industry experience



**Comprehensive Approach**  
Substantial mechanical, electrical, and chemical techniques for integrated solutions



**Customer-Centric Service**  
Customized solutions to meet your specific challenges



**Efficient communication**  
Streamline interactions through our dedicated portal site.

### Our Expertise



Solution

Corrosion analysis: PCBA, coolant couplers, high-power MSBS, etc.

Material deposition: Unknown deposits on ICs & PCBA components

Coolant system: Sediments in manifolds and particulates in filters

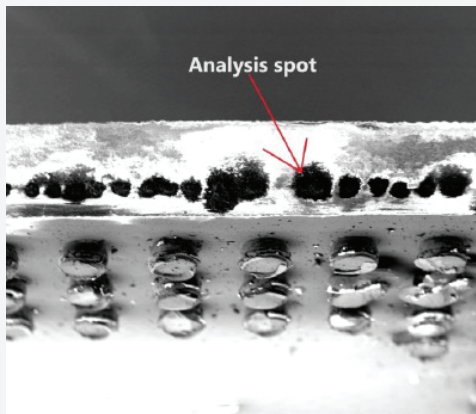
Failure analysis: Destructive or non-destructive testing to ID failure

### Work Procedures

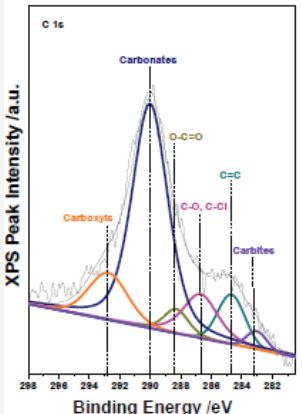
|                      |  |
|----------------------|--|
| Consultation         | Share your challenges with us via email or through the Free Consultation page on our portal site.                          |
| Proposal Alignment   | Receive a customized proposal tailored to your specific needs.   |
| Analysis Execution   | Conduct comprehensive analyses based on the agreed proposal using advanced methodologies.                                  |
| Insightful Reporting | Provide detailed, actionable insights to guide resolution, delivered through a comprehensive report and an online meeting. |

### Examples of Work

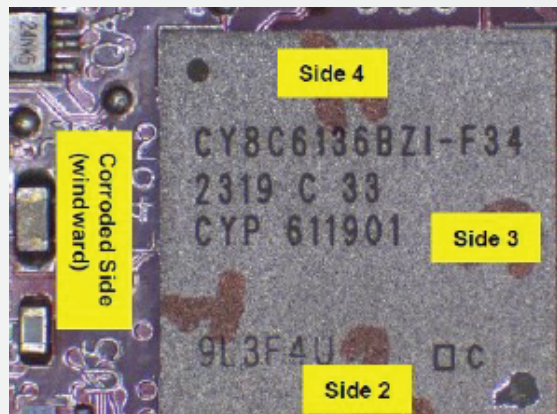
Corrosion on a side of an IC device



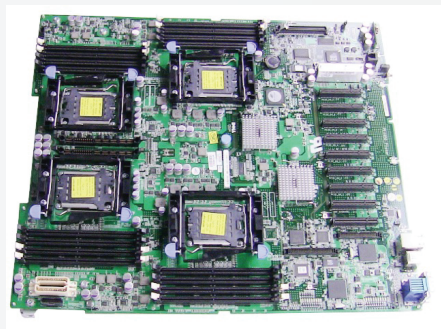
XPS for chemical analysis



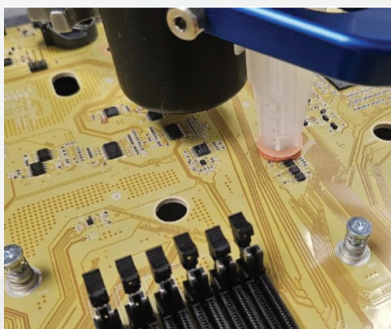
IC Device with corrosion



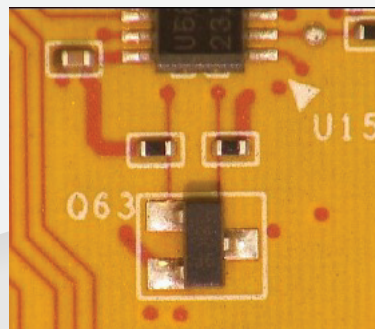
M/B for server



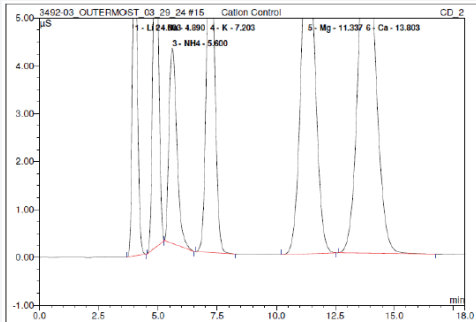
Localized IC analysis (C3)



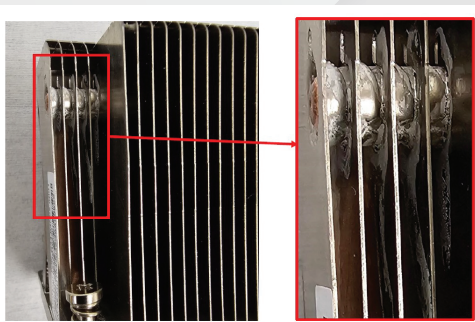
Unknown deposition on a IC device



Ion Chromatography



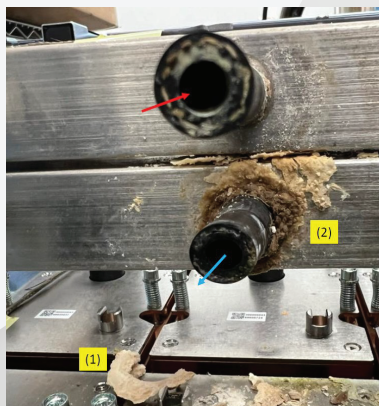
Unknown deposition on cooling fans



Unknown deposition on couplers



Sediments on coolant manifold



Particulates in coolant filter



Corrosion on bolt/nut used for MSB



### GET IN TOUCH

Ready to enhance the reliability and performance of your data center?  
Contact us for expert analysis and innovative solutions.

☎ 408-889-1019    ✉ [info@outermost-tech.com](mailto:info@outermost-tech.com)    📍 [www.outermost-tech.com/portal](http://www.outermost-tech.com/portal)